

# ENT ENDOSCOPY

Akino  
Surgery Simplified

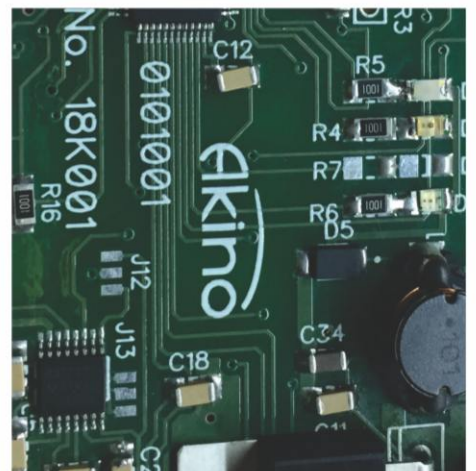
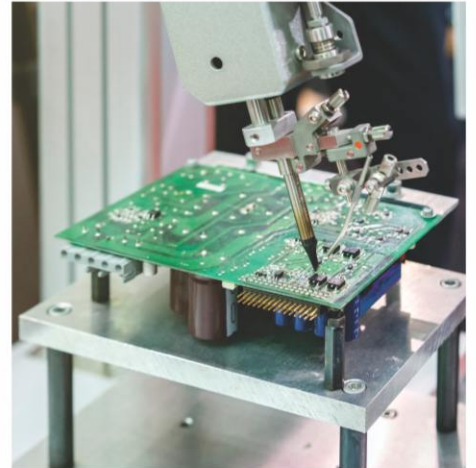




## JAPANESE TECHNOLOGY

Akino Medical Pte Ltd manufactures innovative Endoscopy vision Systems covering all technology platforms right from 2 MP vision to 12 MP 3D cameras to cover requirements of simple to very advanced Endoscopic surgeries.

Akino visualisation systems are designed in Japan. Critical electronic boards are made in Japan & finally assembled in its Singapore factory. Singapore is strategically chosen as factory location due to its proximity to Asia pacific, Middle East and European markets. Akino strengths lie in developing latest vision systems that uses Integrated CMOS platform, more advanced than older generation CMOS.

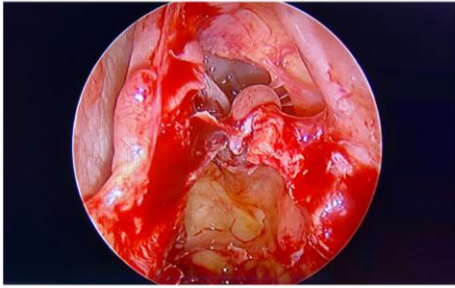
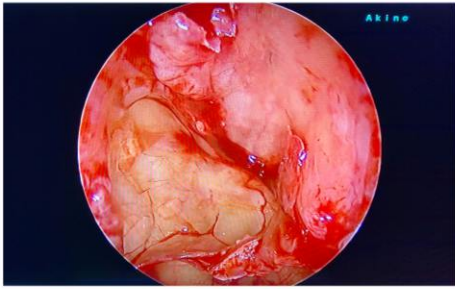


## INTEGRATED CMOS

AKINO CAMERAS ARE BASED ON INTEGRATED CMOS PLATFORM THAT HAS IMPROVED LAST GENERATION CMOS TECHNOLOGY THROUGH ALGORITHMS & SOFTWARES DEVELOPED IN ITS OWN R & D DEPARTMENT

## Erato 3 - 6 MP with Recording

### Integrated CMOS Platform -



Latest image capture technology is based on CMOS platform. CCD is becoming obsolete as CMOS has higher native resolution & direct digital image capture. Result is high image resolution, more natural colours & better light sensitivity.

Akino, Erato series uses latest integrated CMOS technology that has latest Algorithms & Softwares which enable surgeons to get better surgical vision

### FEATURES

- + 6MP - 1920x1080 pixels on Integrated CMOS, full HD native resolution
- + Dual Vimage mode for malignant tissue detection
- + Hi Res mode for ultimate clarity
- + Built in full HD Recording with quality same as live surgery
- + Digital & optical zoom as standard option. Surgeons will not lose the field now
- + Ethernet output for transmitting recorded images on your server
- + 8 Surgery selection modes, ideal in multispeciality hospitals. No need to adjust internal settings
- + 4 buttons on camera head for 8 functions - Surgery selection, Menu - just in case to fine tune some parameters to surgeon's personal liking, Digital Zoom, Vimage mode selection, Hi Res ON/OFF, Recording ON/OFF & Still image capture
- + Adaptability to 2MP camera head
- + Outputs DVI-Dx2, 3G - SDIx2 ( 1080p). Easy to connect to satellite monitors, pendants, to server room & auditorium

Optical Zoom Knob

- 4 Buttons - 8 Functions
- Video Recording On / Off
- Still Image Capture

6MP INTEGRATED  
CMOS PLATFORM +

BUILT IN FULL HD RECORDING +

DUAL VIMAGE MODE +

OPTICAL ZOOM +

ETHERNET OUTPUT +



2 MP INTEGRATED CMOS +

BUILT IN HD RECORDING +

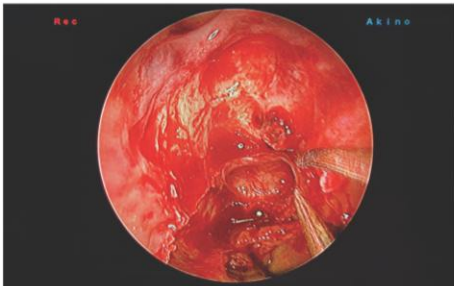
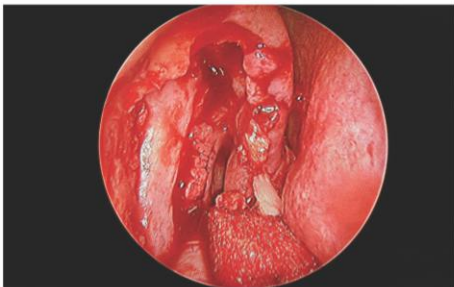
SINGLE VIMAGE MODE +

DIGITAL ZOOM +



## Erato 2 - 2 MP with Recording

### FEATURES



- + Integrated CMOS platform
- + 2 MP - 1920 x 1080 pixels on CMOS, Full HD native resolution
- + Hi Res mode for ultimate clarity
- + Built in full HD recording - 1080p
- + 8 Surgery Selection modes
- + 4 buttons on camera head for 8 functions - Surgery selection, Menu - just in case to fine tune some parameters to surgeon's personal liking, Digital Zoom, Vimage ON/OFF, Hi Res ON/OFF, Video recording and Still image capture
- + Single Vimage mode for malignant tissue detection
- + Red & Blue adjustments
- + Outputs DVI-Dx2, HD - SDI x2 . Easy to connect to satellite monitors, pendants, to server room & auditorium



Model Erato 1 without recording also available (All other features are at par with Erato 2)



## Surgical Displays - FHD

---

Akino Surgical Displays fully made in Japan are latest generation that gives brilliant image. Loaded with 12 bit image processing, Akino monitors have special hyper image enhancer.

### FEATURES

- + Full HD Surgical displays, IPS, LED back light
- + High luminance of 900 cd/m<sup>2</sup> , twice as bright as conventional medical displays
- + Hyper Image Enhancer for better image in deeper cavities
- + Memorized Still image for comparing with current video
- + Multiple inputs & outputs – DVI-D, 3G- SDI
- + 12 bit signal processing that gives most natural colours & uniform brightness
- + Split screen - Side by side or PIP. You can view 'C' Arm image side by side with Endoscopy image
- + User preset memory & Function key

### AVAILABLE IN SIZES -

- 1) 22" Surgical Display – Full HD – 1920 x 1080
  - 2) 24" Surgical Display – Full HD – 1920 x 1200
  - 3) 26" Surgical Display – Full HD – 1920 x 1080
  - 4) 32" Surgical Display – Full HD – 1920 x 1080
- \*26" & 32" Surgical Display available in 3D also.



HIGH LUMINANCE OF  
900 cd/m<sup>2</sup> +

HISE MODE +

IPS LED BACKLIT +

## Surgical Display – 4K

---

Akino 27" IPS 8 MP (4K) display is compatible for 4K cameras that has HDMI 2.0 or display port 1.2, Resolution 3840x2160. The monitor is also compatible to Akino 6MP FHD camera & gives en-hanced image to 4K level.

### FEATURES

- + Picture Enhancement function
- + Optical bonding glass that eliminates any reflections
- + Picture optimisation function

HIGH LUMINANCE +

BRIGHTER THAN  
300 WATTS XENON +

TURRET FOR FOC +

SMALL SCOPE MODE +

SPECIAL COOLING MECHANISM  
DUAL FAN +



## LED Light Source - Staro 2

---

Akino, Staro2 LED light source is designed to give high colour accuracy like Xenon. It has very high CRI that gives better colours. Packed with lot of safety features to protect FOC & enhance the life of Endoscopes.

### FEATURES

- + LED light source with Turret for Multi brand cable adaptability
- + Intensity higher than 300 watts Xenon
- + Special cooling mechanism with dual fan keeps output temperature under control
- + Unique small scope mode so that scopes 4mm & below don't get excessively heated. This enhances the life of Endoscopes & FOC.
- + LED hrs consumed meter
- + Safety features such as Temperature display, high temperature cut off, Fan status
- + Standby button
- + Fiber optic cable with 4.8mm diameter, 300cm length, metal braided

## Fiber Optic Cable

---

### FEATURES

- + 4.8mm core diameter
- + 300cm length
- + Metal braided for longer life
- + Fused bonding to withstand high temperature upto 300°C
- + Autoclavable



# ENT Endoscopes

Akino Endoscopes have many unique features that give excellent optical clarity & longer life of the Endoscope. Thanks to “High speed Rod lens” system, patented design.

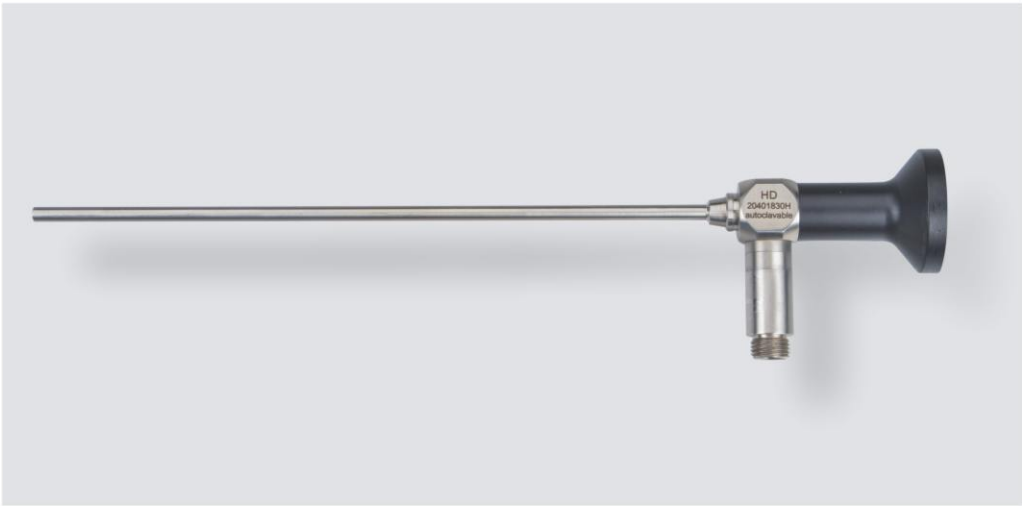
## FEATURES

- + Multicoated optical system
- + High Magnification HD optics
- + Optimum colour rendering
- + High contrast image even at periphery
- + Laser welded joints for longer life
- + Sapphire tips for scratch resistance
- + Glass cone to optimise light input
- + Nitrogen filled to avoid internal fogging

4 mm Sinuscope	HD Art.No.
0°	2040.1800H
30°	2040.1830H
45°	2040.1845H
70°	2040.1870H
WL	185mm

3 mm Sinuscope	HD Art.No.
0°	2030.1500S
30°	2030.1530S
WL	150 mm

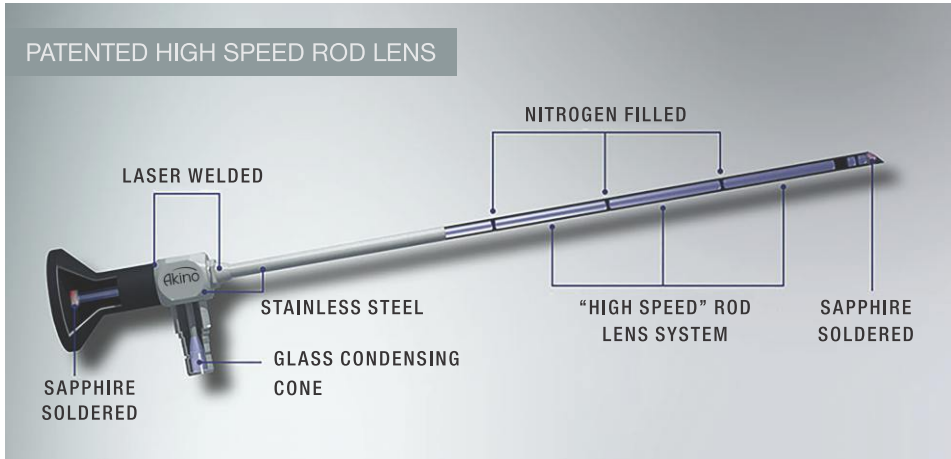
6 mm Laryngoscope	HD Art.No.
70°	2060.1670S
WL	160 mm



# Flexible Nasopharyngoscope

## FEATURES

- + HD Optics in 3.4 mm, Diagnostic
- + Bending Angles 130°
- + Working length 300 mm
- + Field of view 85°
- + Soakable
- + Supplied with leakage tester





**Akino Medical Pte Ltd**

[www.akinomedical.com](http://www.akinomedical.com)

**JAPAN:**

Level 9 Ariake Frontier Building,  
Tower B 3-7-26 Ariake, Koto-ku,  
Tokyo 135-0063, Japan  
Tel.: +81 3 5530 8429  
Email: [info.jp@akinomedical.com](mailto:info.jp@akinomedical.com)

**SINGAPORE:**

362, Upper Paya Lebar Road,  
#04-09, Da Jin Factory building,  
Singapore - 534963  
Tel.: + 65 68087810  
Email: [info.sg@akinomedical.com](mailto:info.sg@akinomedical.com)

AKINO NEAREST REPRESENTATIVE

